

Hailo 15H AI camera

World's smallest Hailo 15H AI camera



Overview

Introducing our highly modular compute stack, built on the powerful Hailo 15H platform.

Designed for seamless adaptability, this product features a modular board architecture that allows components to be stacked for flexible configurations.

Unlock the full potential of AI driven imaging with the versatile and unmatched performance of the Hailo 15H AI accelerator.

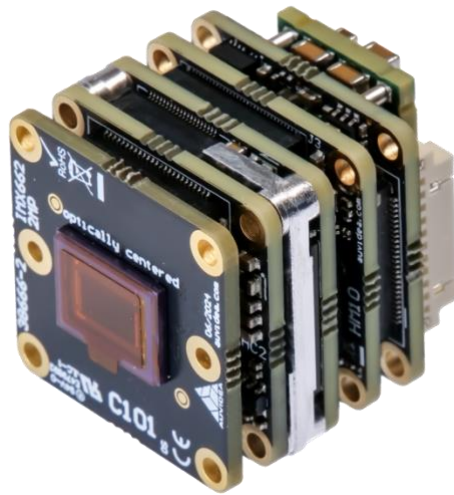
Features

- Up to 20 TOPS on a neural network core for parallel DL model processing
- High FPS for faster, accurate object detection per frame
- Optimal AI performance at standard power and cost
- AI powered enhancements for noise reduction, digital zoom, stabilization, and correction
- Premium 4k60 quality with HDR and noise reduction
- Leading DSP vision processing and video encoding
- Ideal as propriety processor for Jetson systems
- Custom configuration is available on request
- Designed and manufactured in Germany



Technical specification: Hailo 15H

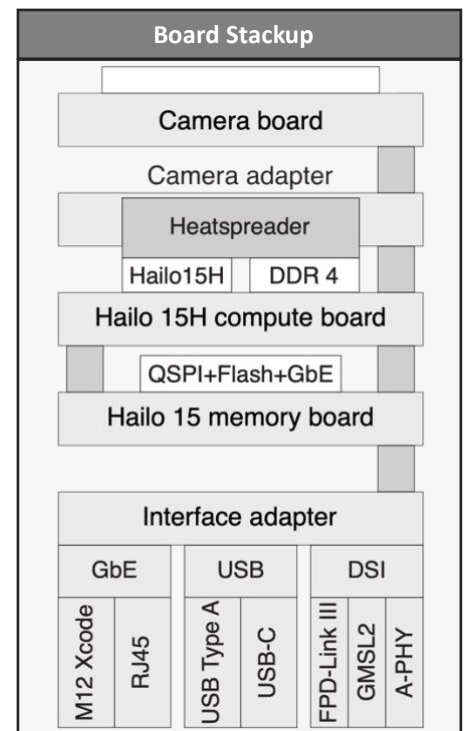
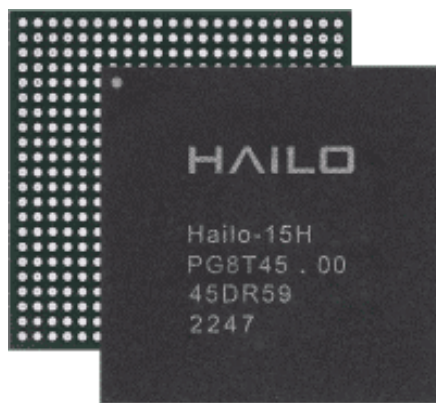
Feature	Description
AI performance	20 TOPS
Application processor	Quad-Core ARM A53 with up to 1.3 GHz (12kDMIPs)
Memory	4GB (LPDDR4 32bit @4266 MT/s)
Flash memory	Micro SD (16GB to 1TB) or eMMC (4GB to 64GB)



compute stack mockup (for illustration purposes only)

Technical specification: compute stack

Feature	Description
Board size	25.5mm x 25.5mm
Board spacing	3.0mm, 4.0mm (heat spreader)
Board thickness	1.6mm
Mounting	4x M2



Preliminary

Specifications subject to change without notice. All trademarks are property of their respective holder.

Hailo 15 AI camera

Camera board

C101	C102	C200
IMX662 2.1MP Starvis 2 Rolling shutter	IMX678 8MP Starvis 2 Rolling shutter	IMX900 3.2MP Global shutter



Camera adapter

HC 2



top view



bottom view

- HC2: to interface to Auvidia Cxxx camera modules
- Add HC3 adapter to interface to standard FPC (22p) camera models

Hailo 15H compute board

H100



top view



bottom view

- 4GB LPDDR4

Hailo 15 AI camera

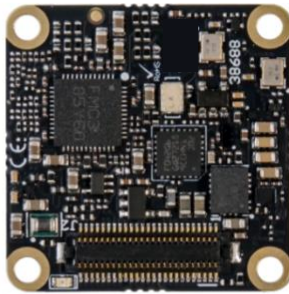
Hailo 15H memory board

HM10

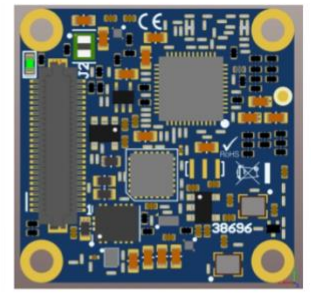
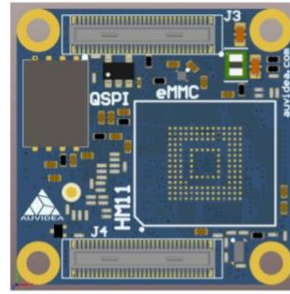
HM11



top view



bottom view



- QSPI (32MB)
- Micro SD
- GbE PHY
- MCU

- QSPI (32MB)
- GbE PHY
- eMMC (4-64GB)
- MCU

Interface adapter

HC10

USB

DSI



top view



bottom view



- GbE with PoE (12W)
- CSI/DSI (FPC 22p)
- USB 3.0 (FPC 12p)

- USB Type A
- USB-C

- Serialisers:**
- FPD-Link III
 - GMSL2
 - A-PHY

Click to see our production in action:



About Auvidea:

- Professional PCB design services
- Fully automated inhouse manufacturing for best quality and lowest cost
- SPI checks for perfect solder paste application
- High speed Panasonic pick and place systems offer best precision, speed, control and traceability
- Soldering in a vapor oven
- 2D and 3D automatic optical inspection (AOI)
- Top quality with very little return rates
- Short lead times and quick turn prototypes
- Manufacturing capacity available