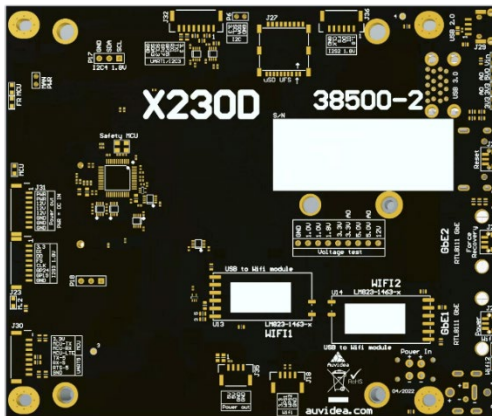


X230D for NVIDIA Jetson AGX Orin

Development board for the AGX Orin

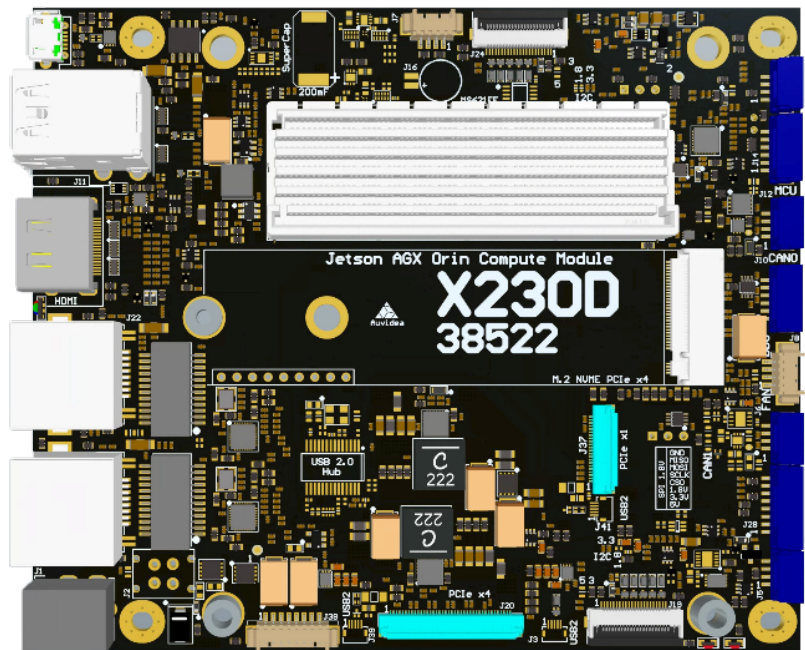
This system lets you dive into AI with ease. It allows you to explore AI applications like people detection, face masking and more. The full suite of NVIDIA SDKs may be installed. The X230D features an industrial strength design and is commercially deployable in any volume.



The carrier board is only populated on the top side with the development (D) version.

Technical Specifications

Description	X230D
Operating Voltage	12V
Fan connector	yes
Jetson power modes	30W + MAXN
RTC supercap	200mF
Rechargeable lithium cell (MS621FE)	optional
Revers voltage protection	yes
Overvoltage protection	yes
HDMI out	1x
USB 2.0	1x (micro)
USB 3.0	2x
MCU	yes
GbE 1 (RJ45)	1x(native), 1x (i210 PCIe to GbE)
CAN (RX/TX only)	1x
CAN	1x
UART	1x
I2C	2x
PCIe x4/I2C combo	1x
Autoflashing	yes
Debug port	yes
Fan connector (12V, PWM)	1x
RGB LED (GPIO controlled)	yes
Size	125x104.6mm



X230D

SKU	Part
70416	X230D carrier board

The X230D is specially designed for the AGX Orin and is not fully compatible with the AGX Xavier! For the AGX Xavier please choose the X221D which features the same layout and specification.

*Available with alternative and fully populated versions

Specifications subject to change without notice. All trademarks are property of their respective holder.

